



CASE STUDY

Whitefriars Housing Group

"Cities Revealed aerial photography provides us with a clear visual aerial record of all our properties and land directly from the desktop, helping to speed up tenants' land-based queries previously involving an actual visit" Whitefriars Housing Group



Photograph courtesy Whitefriars Housing Group

Overview

Government guidelines require housing providers to bring all social housing into a decent condition by 2010. Since the transfer of some 20,000 former council homes back in September 2000, Whitefriars Housing Group became responsible for establishing good quality homes and neighbourhoods within the city of Coventry.

The Problem

Managing this number of properties meant that the Group's surveyors were regularly involved in laborious and often complicated site visits to help solve tenant land based enquiries.

The Group required a way to dramatically reduce the time spent in resolving these enquiries to ensure that an even faster and more efficient service to their tenants could be achieved.

Aerial Photography Improves Management of Affordable Homes

The Solution

Tangling with tapes and poring over maps is now a thing of the past for Whitefriars Housing Group surveying staff since the acquisition of Cities Revealed™ digital aerial photography. The 12.5 cm resolution, seamless imagery presents a true and immediate bird's eye view of all the properties they maintain. This means that many tenants' location-based queries can now be instantly disputed and resolved via the computer.

The high level of photographic detail that clearly identifies features such as individual trees and outbuildings, often lacking from conventional maps, was considered an important prerequisite by Whitefriars Housing Group to ensure optimum visual exposure of their land.



Air photo overlaid with Ordnance Survey Land-Line data for property boundary verification

Land Ownership

The clarity of detail within the photography enables the staff to deal with tenants' complaints, for example landscape maintenance. Viewing the imagery directly from the desktop makes it possible for surveyors to quickly establish the exact location of the land in question and determine who is responsible for its maintenance.



New development

Nearing completion of its homes improvement programme, Whitefriars Housing Group is concentrating on adding to Coventry's housing stock. Cities Revealed photography is helping to support this by presenting surveying staff with a true and accurate overview of potential new housing sites within the context of the local environment.

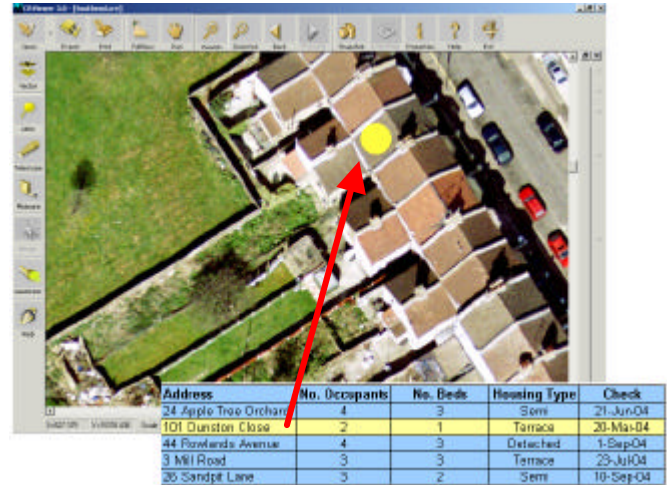
When used in conjunction with other data, such as socio-economic information and Ordnance Survey mapping, the Group is able to make faster, more effective decisions about both the financial and logistical implications of developing at a specific location.



Cities Revealed aerial photography helps to clearly identify those properties maintained by Whitefriars Housing Group

Benefits

- ??Offers an immediate aerial record of properties reducing the need for site surveying
- ??Rapidly reveals and verifies property boundaries in response to tenants' enquiries
- ??Communicates valuable information through an easily understood medium
- ??Enables quick scanning for potential new sites
- ??Shows properties in the context of the local surroundings
- ??Delivers full compatibility with GIS and OS mapping



Aerial photography provides a highly visual backdrop for property information retrieval

Features

- ??Full colour, high resolution, ortho photo databases
- ??6.25 cm – 25 cm pixel resolution
- ??Supplied in compressed format with free Cities Revealed Image Manager
- ??Availability of customised rolling aerial survey programme to capture small areas of change
- ??Imagery rectified to OS mapping

Other Users

Property management organisations throughout the UK are utilising Cities Revealed high-resolution aerial photography for many applications including research, project planning and development. Clients include:

- ?? Glasgow Housing Association
- ?? Bellway Homes
- ?? Fairview Homes
- ?? Bidwells Property Consultants
- ?? Crosby Homes Ltd



Telford House, Cow Lane, Fulbourn, Cambridge, CB1 5HB, United Kingdom

(t) + 44 1223 880077
(f) + 44 1223 880097

www.citiesrevealed.com